

Contact us

aemo

Montagnes neuchâteloises

Av. Léopold-Robert 51, 2300 La Chaux-de-Fonds

Tél.: 032 886 88 99

aemo.cdf@ne.ch

aemo

Littoral, Val-de-Ruz et Val-de-Travers

Rue de la Fontaine 4, 2034 Peseux

Tél.: 032 886 89 11

aemo@ne.ch

www.fondation-carrefour.net

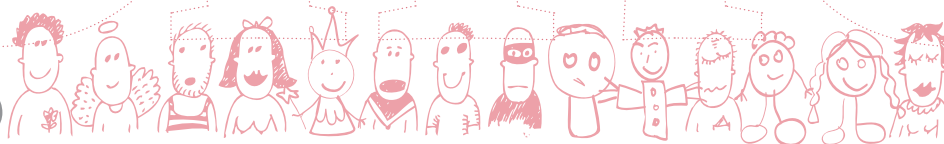
aemo is part of: fondation
cairefour
▼ accompagnement éducatif ambulatoire



aemo

Open-environment Educational Action

The aemo



is a service specialized in ambulatory educational support

This individualized support builds itself at the family's rhythm, depending on it's needs.

For whom

Parents and their children (0-18 years old) with educational, relational or social difficulties.

Together we can

- Identify and understand the child or teenager's needs in order to improve his or her physical, mental, affectional and social development
- Reinforce the parents' educational skills
- Support the creation and upkeep of the "parent-child" links.
- Look for solutions to everyday struggles
- Promote social links

How

- Regular meetings at home, at the AEMO or outside
- Places where the parents, children and teenagers can speak freely
- Collaboration with different partners
- Support limited in time

Cost

- The service doesn't require financial participation from the families
- The service is financed by the state of Neuchâtel and collaborates with the Child Protection Office

A personal engagement is essential to this process